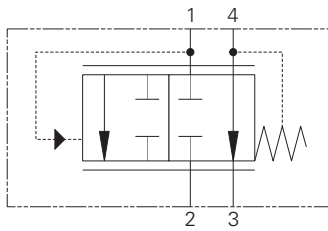


PCS4-10 - Pressure compensator

Bypass or priority
38 L/min (10 USgpm) • 210 bar (3000 psi)



Operation

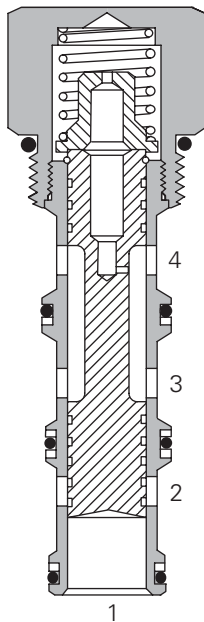
This valve, when used with either a fixed or variable orifice on port 4, maintains a constant flow out of port 3, regardless of pressure changes downstream of port 3. This is based on whatever pressure differential is chosen.

All flow in excess of the priority requirement is bypassed from port 1 to port 2. If the priority port is deadheaded, the valve will try to direct flow out of the priority port and shut off the bypass flow, blocking of all flow.

Features

Hardened and ground and honed working components. Cartridge construction for maximum mounting flexibility.

Sectional view



Performance data

Ratings and specifications

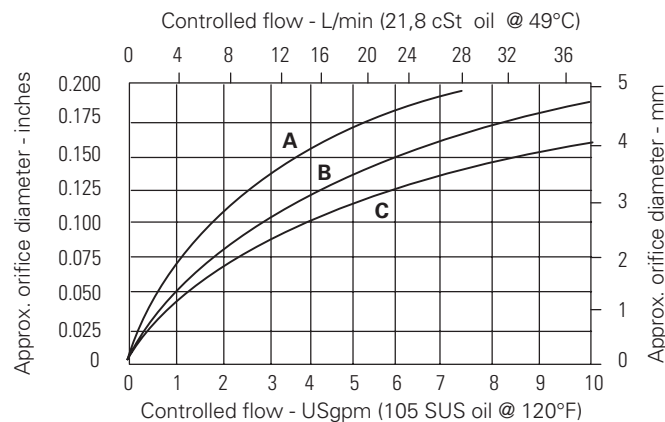
Performance data is typical with fluid at 21,8 cSt (105 SUS) and 49° C (120° F)

Typical application pressure (all ports)	210 bar (3000 psi)
Cartridge fatigue pressure (infinite life)	210 bar (3000 psi)
Rated flow	38 L/min (10 USgpm)
Cavity	C-10-4
Standard housing materials	Customized housings are necessary for close-coupling, the compensator and orifice
Temperature range	-40° to 120° C (-40° to 248° F)
Fluids	All general purpose hydraulics fluids such as: MIL-H-5606, SAE 10, SAE 20 etc
Filtration	Cleanliness code 18/16/13
Weight cartridge only	0,14 kg (0.32 lbs)
Seal kit	889651 (Buna-N) 889653 (Viton®)

Viton is a registered trademark of E.I. DuPont

Performance characteristics

Cartridge only



- A** - 2,8 bar (40 psi) (control ΔP)
- B** - 5,5 bar (80 psi) (control ΔP)
- C** - 11,0 bar (160 psi) (control ΔP)

Description

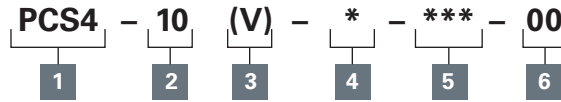
This is a priority style compensator suitable for use with a separate needle valve or orifice to provide a priority pressure compensated flow. This when used in a manifold is ideal for motor or cylinder control where priority is required.

Where measurements are critical request certified drawings. We reserve the right to change specifications without notice.

PCS4-10 - Pressure compensator

Bypass or priority
38 L/min (10 USgpm) • 210 bar (3000 psi)

Model code



1 Function

PCS4 - Pressure compensator restrictive type

2 Size

10 - 10 size

3 Seal material

Blank - Buna-N

V - Viton®

4 Port size

0 - Cartridge only

(Customized housings are necessary for close-coupling, compensator and orifice)

5 Pressure differential (Nominal)

40 - 2,8 bar (40 psi)

80 - 5,5 bar (80 psi)

160 - 11,0 bar (160 psi)

6 Special features

00 - None

(Only required if valve has special features, omit if ("00".))

Dimensions

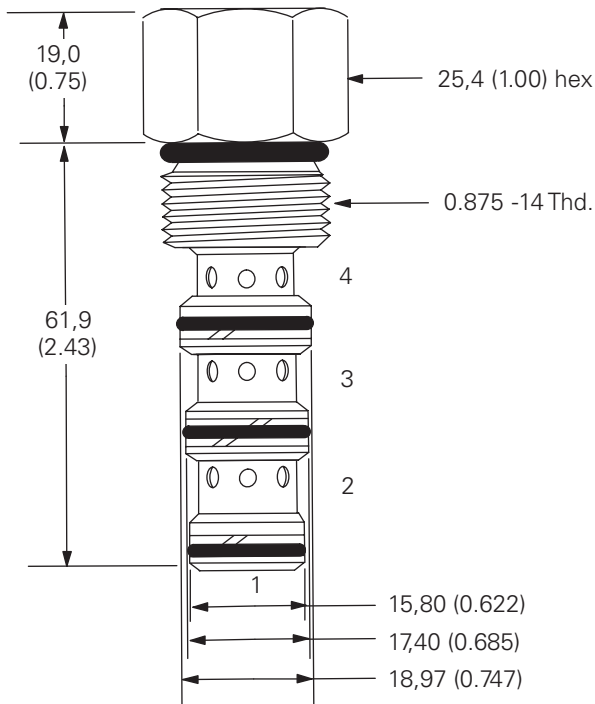
mm (inch)

Cartridge only

Basic code
PSC4-10

Torque into aluminum housing
to 47-54 Nm (35-40 ft lbs)

Torque into steel housing to
68-75 Nm (50-55 ft lbs)



Where measurements are critical request certified drawings. We reserve the right to change specifications without notice.