

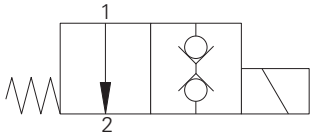
S207 - Solenoid Valve

Poppet type, normally open solenoid valve

Port 1 - 1 L/min (0.25 USgpm) • 350 bar (5000 psi)

Port 2 - 1 L/min (0.25 USgpm) • 210 bar (3000 psi)

A



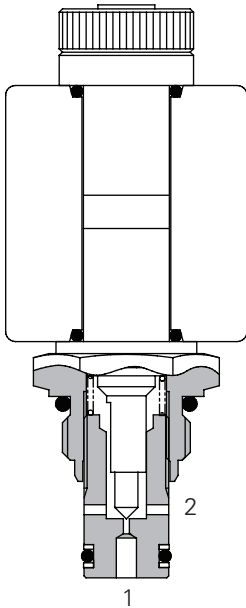
Operation

In the de-energized position the valve allows free flow from port 1 to 2. When the solenoid is energized the poppet closes the valve blocking flow from port 1 to 2 and 2 to 1.

Features

- High flow capacity with reduced space requirements.
- No dynamic seals.
- Standard valve bodies and common cavities.
- One-piece encapsulated coil with minimal amperage draw.
- Oil immersed armature solenoid.
- Various coil terminals and voltages.
- Coil interchangeability with valves of same series.
- Manual override, seal variations and other options available.
- Sealed coil arrangement to protect stem from corrosion.

Sectional View



Performance Data

Ratings and Specifications

Performance data is typical with viscosity at 32 cST (150 SSU)

Max working pressure	Port 2 210 bar (3000 psi) Port 1 350 bar (5000 psi)
Rated flow	1 L/min (0.25 USgpm)
Internal leakage	0.3 ml/min (5 dpm) when energized 210 bar differential at 32 est.
Temperature range	-30° to 120°C (-22° to +248°F)
Cavity	A879 (see Section M)
Torque cartridge into cavity	20 Nm (15 lbs ft)
Mounting position	Unrestricted
Fluids	All general purpose hydraulics fluids such as MIL-H-5606, SAE 10, SAE 20, etc
Seal Material	Standard Viton with PTFE back up rings
Filtration	BS5540/4 Class 18/13 (25 micron or better)
Nominal viscosity range	15 to 250 cSt
Standard housing materials	Aluminium
Cartridge material	Working parts hardened and ground steel. External surfaces zinc plated.
Coil Weight	0.2 kg (0.4 lbs)
Weight	0.1 kg (0.2 lbs)
Seal kit	SK1043V (Viton)
Coil part number	C13-*/*/22
Coil voltage available	12, 24 VDC, 110, 220, VAC*

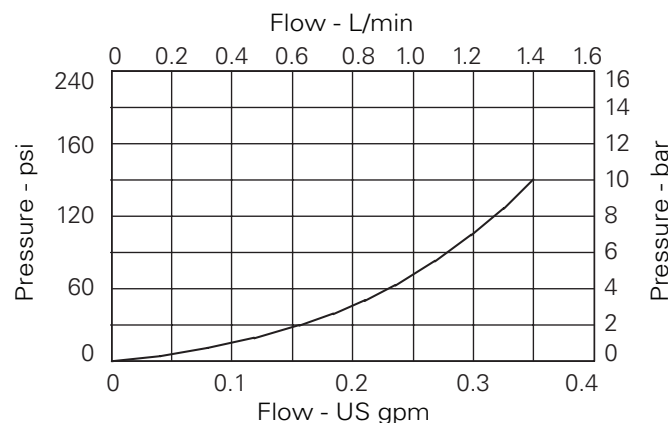
Viton is a registered trademark of E.I. DuPont

*AC coils must be used with a rectifying connector

Description

This is a 2-way, 2-position, poppet type, low flow, high pressure, normally open solenoid valve. This valve is used as a pilot valve to control pilot lines or as the pilot valve for logic elements. It can be used to vent systems up to 350 bar (5000psi) on the inlet port but the outlet port should be limited to 210 bar (3000psi).

Pressure Drop



Where measurements are critical request certified drawings. We reserve the right to change specifications without notice.

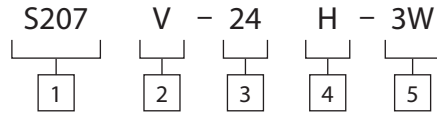
S207 - Solenoid Valve

Poppet type, normally open solenoid valve

Port 1 - 1 L/min (0.25 USgpm) • 350 bar (5000 psi)

Port 2 - 1 L/min (0.25 USgpm) • 210 bar (3000 psi)

Model Code



1 Function
S207 - Normally open

2 Seal Material
V - Viton®

3 Voltage
12 - 12VDC
24 - 24VDC
110 - 110VAC
220 - 220VAC

4 Coil Termination
H - DIN43650
F - Flying lead
DM - Deutsch moulded
Other terminations available on request.

5 Port Sizes

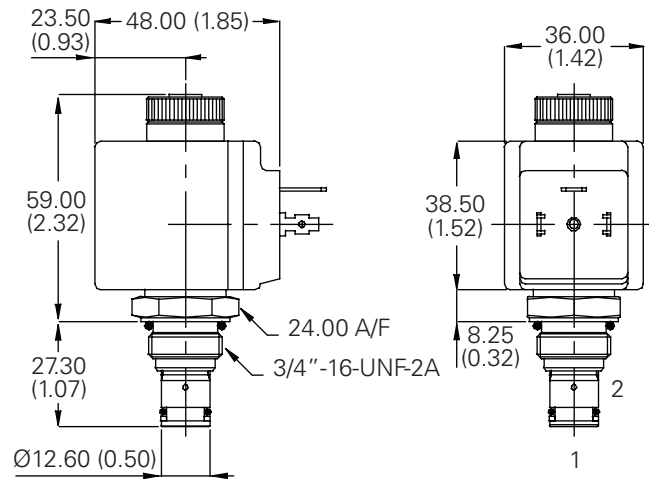
Code	Port Size	Housing Number - Body Only	
		Aluminium	Steel
2W	1/4" BSP	A1485	
3W	3/8" BSP	A1043	A14175
6T	3/8" SAE	A15676	A14843

Dimensions

mm (inch)

Note: For applications above 210 bar please consult our technical department or use the steel body option.

Cartridge Only



Installation Drawing (Aluminum, steel)

