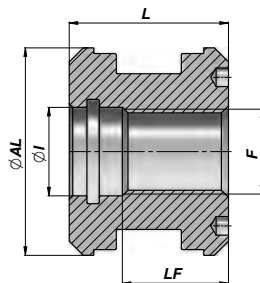
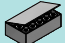



PISTONE FILETTATO
THREADED PISTON

CTF

Series M250



Codice Code	ØAL	F	LF	L	ØI	kg	Confezione Box		Pz Pcs	Set guarnizioni Seal kits	
*CTF2510125	25	M10x1.5	17.5	25	11	0,01	Z00CTF2510125		100	GKGF025010	
CTF0401615	40	M16x1.5	30.0	40	17	0,22	Z50CTF0401615		50	GKGF040016	
CTF0502015	50	M20x1.5	28.0	40	21	0,31	Z50CTF0502015		50	GKGF050020	
CTF0602420	60	M24x2	30.0	45	25	0,58	Z25CTF0602420		25	GKGF060024	
CTF0632420	63	M24x2	30.0	45	25	0,66	Z25CTF0632420		25	GKGF063024	
CTF0702420	70	M24x2	30.0	45	25	0,78	Z25CTF0702420		25	GKGF070024	
CTF0802720	80	M27x2	30.0	45	28	1,08	Z20CTF0802720		20	GKGF080027	
CTF0903320	90	M33x2	35.0	50	35	1,57	Z10CTF0903320		10	GKGF090033	
CTF1003320	100	M33x2	35.0	50	35	2,18	Z10CTF1003320		10	GKGF100033	
CTF1103930	110	M39x3	35.0	50	42	2,40	Z10CTF1103930		10	GKGF110039	
CTF1204230	120	M42x3	35.0	50	45	3,00	Z06CTF1204230		6	GKGF120042	
CTF1254230	125	M42x3	35.0	50	45	3,20	Z06CTF1254230		6	GKGF125042	
CTF1404830	140	M48x3	40.0	58	51	4,90				GKGF140048	
CTF1504830	150	M48x3	40.0	58	51	5,80				GKGF150048	
CTF1605230	160	M52x3	40.0	58	54	6,70				GKGF160052	

MATERIALE : ACCIAIO 9SMn28 -UNI C40 - * = ALLUMINIO UNI 2011-11S
 MATERIAL : STEEL 9SMn28 - UNI C40 - * = ALUMINIUM UNI 2011-11S

GUARNIZIONI : VEDI PAGINA 84
 SEALS : SEE PAGE 84

A RICHIESTA : SET GUARNIZIONI IN VITON
 ON REQUEST : VITON SEAL KITS