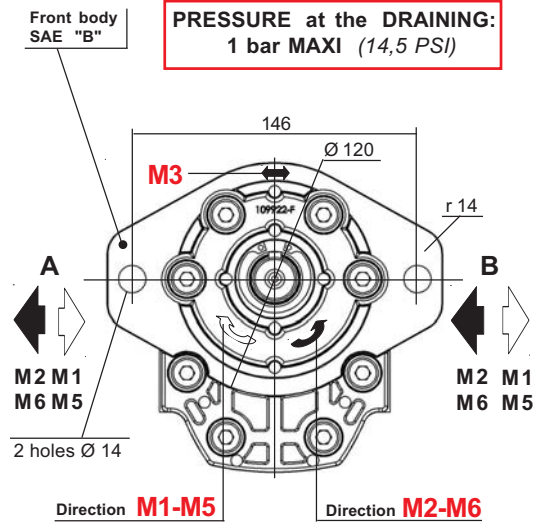
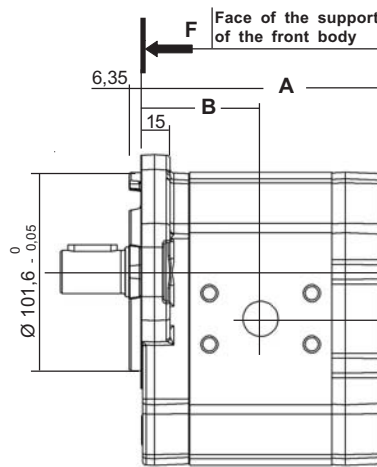
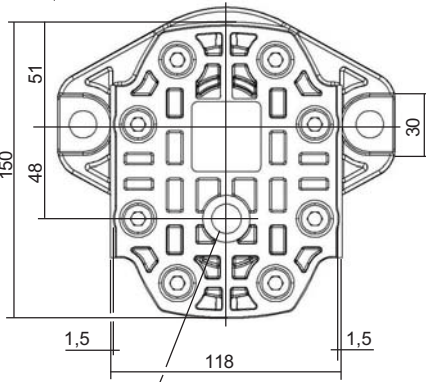


M II Sign AA N 3 VI Sign HL IX Sign X Sign XI Sign XII Sign

For CODIFICATION, see data sheet F.T.R 0243



Drain port 3/8" BSP effective depth 18 for bi directional (M3) or single directional motor (M5/M6) but working with a counter pressure in the return port.

Max. tightening torque of the connexion  
**50 N.m**

CHOICE of the Capacity	Dimensions	
	A	B
025 - 031 - 040	122,7	61,3
050 - 060	149,2	74,5
071 - 080 - 090 - 100	169,2	84,2

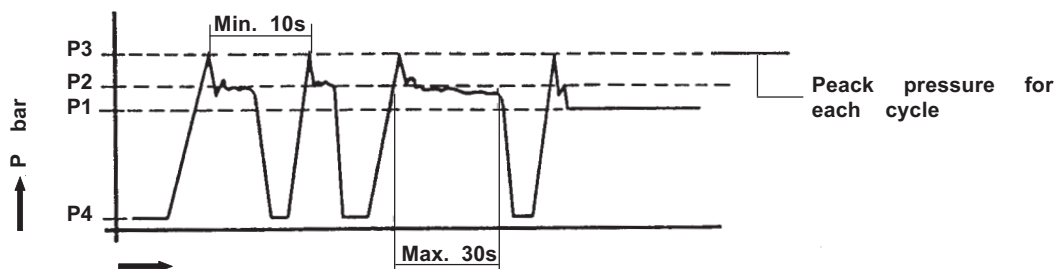
Seal kits:  
**M1 - M2**  
Nitrile: K507041 Viton: K507042  
(For the manufacturings from october 1991)  
**M3 - M5/M6**  
Nitrile: K5071071 Viton: K5071072  
(For the manufacturings from april 1987)

Dimensions readings and approximative characteristics subject to modifications.

MODEL	Capacity cc / rev	MAXI PRESSURE						Maxi speed at		mini speed at RPM			Maxi speed at Δ P ≤ 100 bar (1450 PSI)	approx. weight Kg
		P1		P2		P3		P1	P2	100 bar	210 bar	300 bar		
		bar	PSI	bar	PSI	bar	PSI	RPM	RPM	1450 PSI	3045 PSI	4350 PSI		
3025	25	200	2900	225	3260	250	3625	2500	2800	800	1000	1300	3500	5,6
3031	31	180	2610	210	3045	225	3625	2300	2600	500	1000	1000 <sup>225 bar</sup>	3000	5,6
3040	40	180	2610	210	3045	225	3625	2300	2600	500	800	1000 <sup>225 bar</sup>	3000	5,7
3050	50	175	2537	205	2972	225	3625	2200	2500	500	800	1000 <sup>225 bar</sup>	3000	6,9
3060	60	160	2320	185	2682	225	3262	2000	2300	500	800	1000 <sup>200 bar</sup>	3000	7
3071	71	150	2175	175	2537	225	3262	2000	2300	500	800		2500	7
3080	80	120	1740	150	2175	200	2900	1700	2000	500	800 <sup>175 bar</sup>		2500	7,1
3090	90	100	1450	130	2175	175	2537	1500	1800	400	800 <sup>175 bar</sup>		2000	7,8
3100	100	100	1450	125	1812	175	2175	1500	1800	400	800 <sup>150 bar</sup>		2000	8

On the hereunder indicated diagram, the maximum duty pressure are the following.

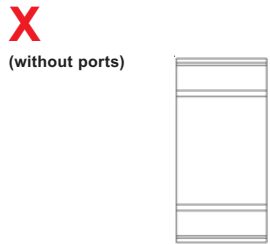
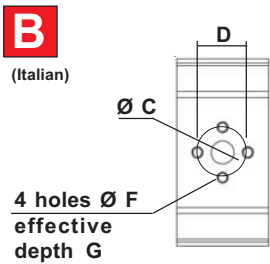
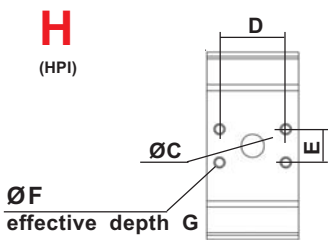
- P1 Maximum pressure in continuous duty
- P2 Maximum pressure in intermittent duty
- P3 Max. Allowable peak pressure
- P4 Pressure at Motor outlet ≤ P (Only in M3)



Consult us for availability

**CHOICE of the IMPLANTATION of PORTS**

Port connector, see our Catalogue N° 70



Capacity	INLET A					OUTLET B				
	ØC	D	E	ØF	G	ØC	D	E	ØF	G
	3025 to 3040	18	52,4	26,2	M8	17	18	52,4	26,2	M8
3050 3060	22	52,4	26,2	M8	17	22	52,4	26,2	M8	17
3071 to 3100	34	35,6	69,8	M8	17	34	35,6	69,8	M8	17
3025 to 3040	18	40		M8	16	27	51		M10	16
3050 3060										
3071 to 3100										
3025 to 3040	Only with rear body Type A									
3050 3060										
3071 to 3100										

AFFECTATION					
1 way rotation without counter pressure				2 ways rotation with counter pressure	
<b>M1</b>		<b>M2</b>		<b>M3</b>	
INLET	OUTLET	INLET	OUTLET	INLET	OUTLET
1 way rotation without counter pressure					
<b>M5</b>		<b>M6</b>			
INLET	OUTLET	INLET	OUTLET	INLET	OUTLET
A	B	B	A	B	A
A	B	B	A	B	A

Dimensions readings and approximative characteristics subject to modifications.

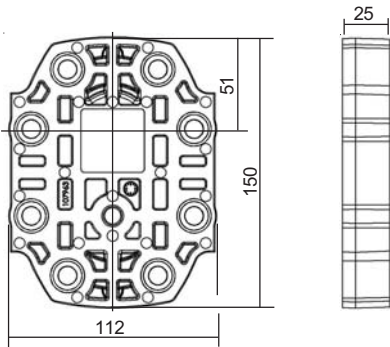
**F.T 30 1479 2/4**

Consult us for availability

REAR BODIES for MOTORS M1 - M2

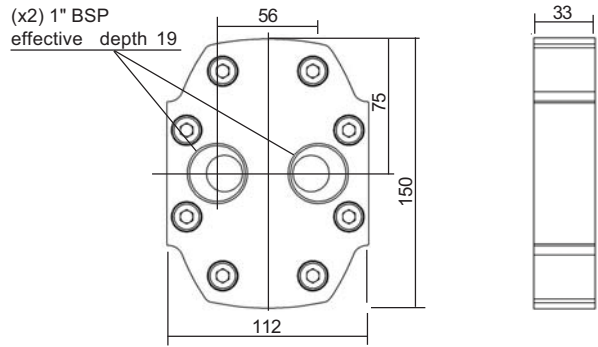
**L**

Standard



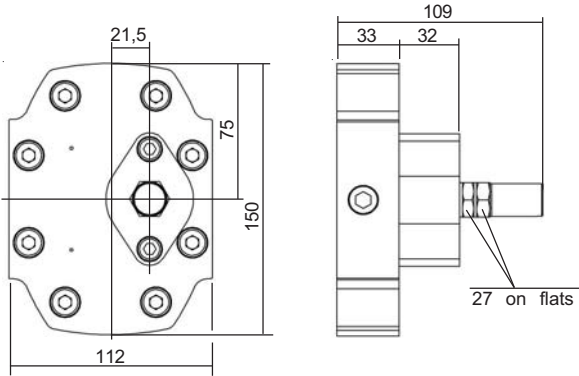
**A**

with ports



**V**

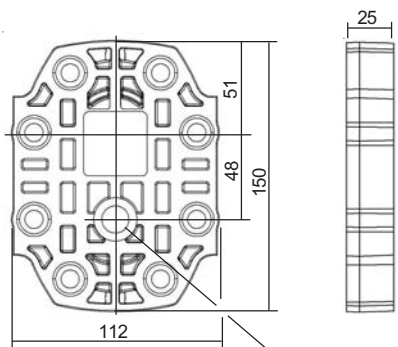
Low pressure relief valve  
(Adjustable) Internal return



REAR BODIES for MOTORS M3 - M5 - M6

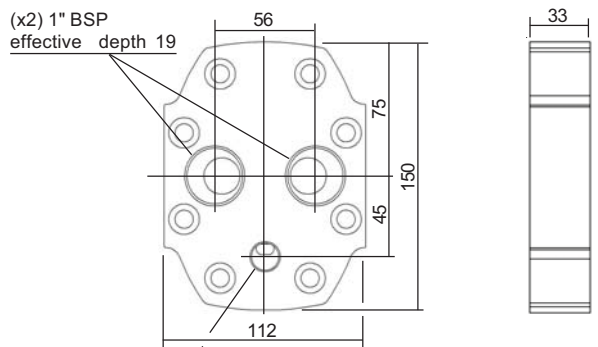
**L**

Standard



**A**

with ports



Dimensions readings and approximative characteristics subject to modifications.

Drain port 3/8" BSP effective depth 18 for bi directional (M3) or single directional motor (M5/M6) but working with a counter pressure in the return port.

Max. tightening torque of the connexion  
**50 N.m**

Drain port 3/8" BSP effective depth 11 for bi directional (M3) or single directional motor (M5/M6) but working with a counter pressure in the return port.

Max. tightening torque of the connexion  
**50 N.m**

**F.T 30 1479 3/4**

DRIVING SHAFT (FLAT FRONT BODY)

Tapered

Straight keyed

Splined

Tang

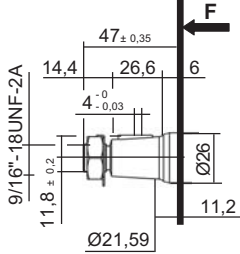
**10**

**20**

**30**

**40**

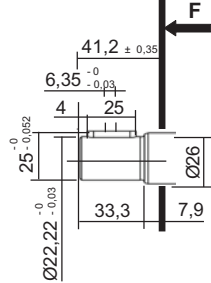
**B03** Taper 1 / 8



Delivered with Nut and lock washer Ref.: K100734 Ref.: K103945

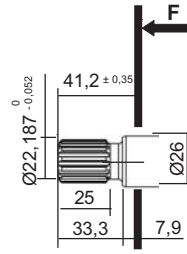
**Maxi transmissible torque**  
**530 N.m**

**A02**



**Maxi transmissible torque**  
**290 N.m**

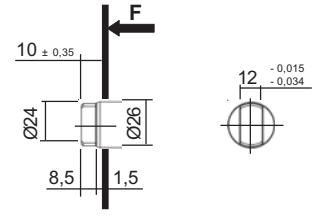
**A02**



Involute spline SAE Standard 13 teeth - 7/8" - Diametral Pitch 16/32 30° Pressure angle

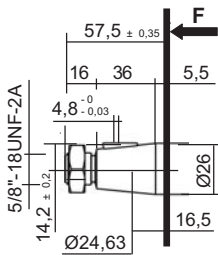
**Maxi transmissible torque**  
**390 N.m**

**C04**



**Maxi transmissible torque**  
**70 N.m**

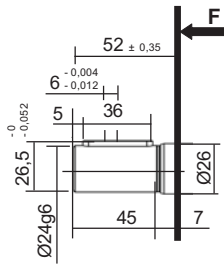
**B04** Taper 1 / 8



Delivered with Nut Ref.: K101877

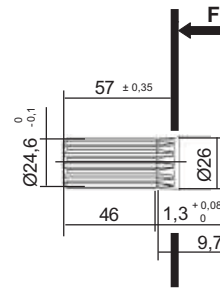
**Maxi transmissible torque**  
**800 N.m**

**C04**



**Maxi transmissible torque**  
**320 N.m**

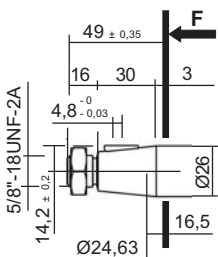
**C03**



Involute spline shaft 25 x 13 x 1,667 to standard NF E 22 141 - BNA 455 Spigot on free flanks

**Maxi transmissible torque**  
**66,5 N.m**

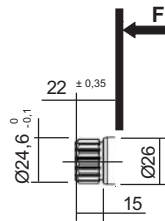
**C04** Taper 1 / 5



Delivered with Nut Ref.: K101712

**Maxi transmissible torque**  
**800 N.m**

**C07**



Involute spline shaft 25 x 13 x 1,667 to standard NF E 22 141 - BNA 455 Spigot on free flanks

**Maxi transmissible torque**  
**48 N.m**

Dimensions readings and approximative characteristics subject to modifications.

F.T 30 1479 4/4



available at:  
sales@atphydraulik.ch  
www.atphydraulik.com

Consult us for availability