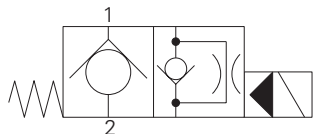


SV12-10-C/CM - Solenoid Valve

2-way, 2-position, normally closed, poppet type solenoid valve

23 L/min (6 USgpm) • 350 bar (5000 psi)



Operation

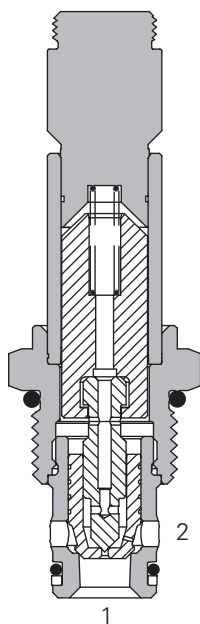
In the de-energized position the valve blocks flow from port 2 to 1 and free flow is allowed from port 1 to 2.

When the solenoid is energized the pilot poppet is pulled off the seat allowing the valve to open from port 2 to 1. In the reverse direction the flow is restricted by the pilot orifice.

Features

Hardened and ground working parts. Lapped seat for low leakage. IP69K Tough coil compatibility. Continuously rated. Compact design with low pressure drop. 350 bar working pressure.

Sectional View



Performance Data

Ratings and Specifications

Performance data is typical with fluid at 21,8 cST (105 SUS) and 49°C (120°F)

Typical application pressure (all ports)	350 bar (5000 psi)
Cartridge fatigue pressure (infinite life)	310 bar (4500 psi)
Rated flow	23 L/min (6 USgpm)
Internal leakage	5 drops/min, max @ 350 bar (5000 psi)
Temperature range	-40° to 100°C (-40° to 212°F)
Coil duty	Continuous from 85% to 110% of nominal voltage
Cavity	C-10-2
Fluids	All general purpose hydraulic fluids such as: MIL-H-5606, SAE 10, SAE 20 etc.
Filtration	Cleanliness code 18/16/13
Housing material (standard)	Steel
Weight cartridge only	0,18 kg (0.39 lbs)
Seal kit	565803 (Buna-N), 566086 (Viton)

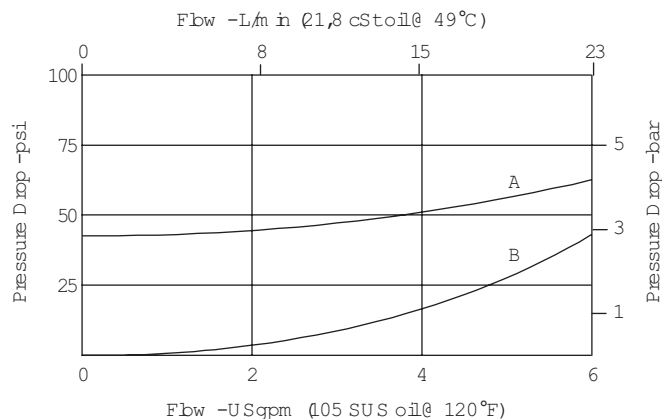
Viton is a registered trademark of E.I. DuPont

Description

This is a 2-way, 2-position, poppet type, high pressure, pilot operated, normally closed solenoid valve. This valve is used in applications requiring low leakage, such as load holding applications or as a general purpose diverter or dump valve.

Pressure Drop

Cartridge only



available at:
ATP Hydraulik AG
Aahusweg 8
CH-6403 Küssnacht am Rigi
www.atphdraulik.com

SV12-10-C/CM - Solenoid Valve

2-way, 2-position, normally closed, poppet type solenoid valve
23 L/min (6 USgpm) • 350 bar (5000 psi)

Model Code

SV12	-	10	(V)	-	C	(M)	-	(S)	**	-	****	*	H	-	00
1		2	3		4	5		6	7		8	9	10		11

1 Function
SBV12 - Solenoid
bi-directional valve

2 Size
10 - 10 size

3 Seal Material
Blank - Buna-N
V - Viton

4 Style
C - Normally closed

5 Manual Override Option
Blank - Cartridge only
A - Aluminum
S - Steel
For valve dimensions with
manual override option installed
see page A-980.

6 Valve Housing Materials
Blank - Cartridge only
S - Steel

7 Port Size

Code	Port Size	Housing Number
0	Cartridge only	
2G	1/4" BSPP	02-175102
3G	3/8" BSPP	02-175103
6T	SAE 6	02-175100
8T	SAE 8	02-175101

See section J for housing details.

8 Voltage Rating

00 - No coil	115A - 115VAC
12D - 12VDC	230A - 230VAC
24D - 24VDC	12B - 12VDC/w diode*
36D - 36VDCI	24B - 24VDC/w diode*
24A - 24VAC	*Optional arc suppression diode.

9 Connector Types
Blank - No coil
G - ISO 4400 DIN 43650
Q - Spade terminals
W - Flying lead
N - Deutsch (DC only)
Y - Amp JR (DC only)
D - Metripack 150 male
(DC only)
J - Metripack 280 male
(DC only)

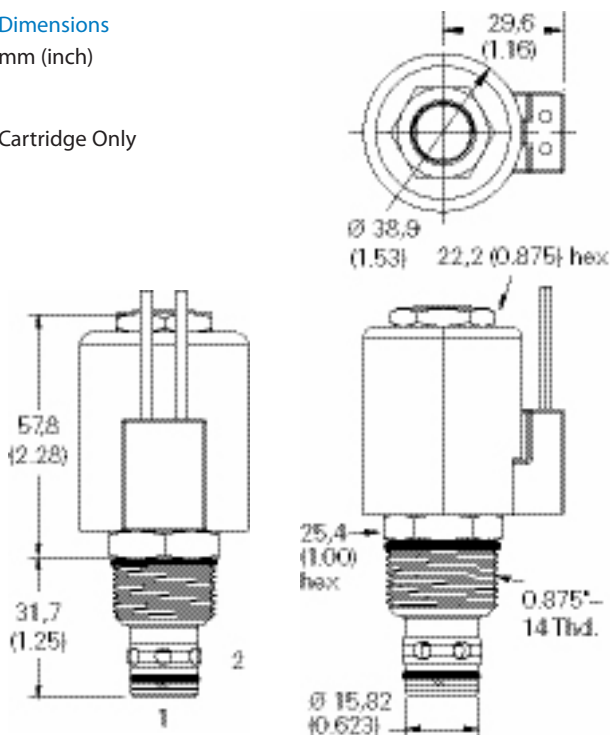
10 Coil Series
H - 10 series, 29 W
For coil part numbers and dimensions
see section C.

11 Special Features
00 - None
(Only required if valve has special
features, omitted if "00.")

Dimensions

mm (inch)

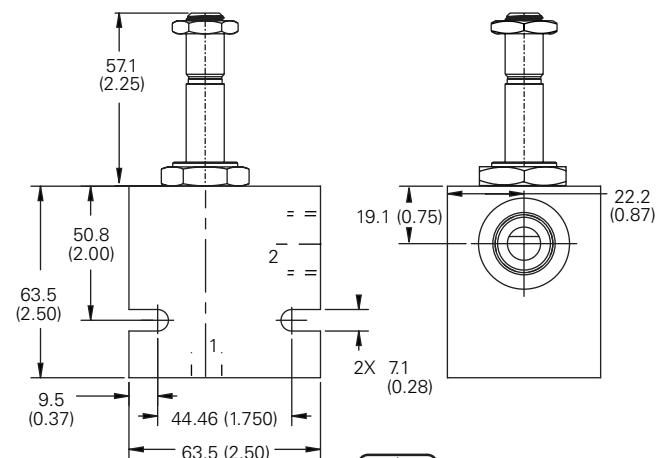
Cartridge Only



Torque cartridge in
steel housing 68-75 Nm
(50-55 ft lbs)

Note: When solenoid valve is
ordered as cartridge only, coil
nut is included.

Installation Drawing



WARNING
Maintain 5-8 Nm
(4-6 ft lbs) maximum
torque on valve tube nut.
Over tightening may cause
valve failure.