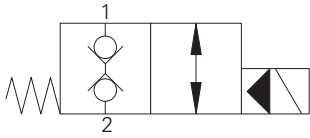


SBV11-8-C - Solenoid Bi-directional Valve

Bi-directional, normally closed solenoid valve
60 L/min (15 USgpm) • 350 bar (5000 psi)

A



Operation

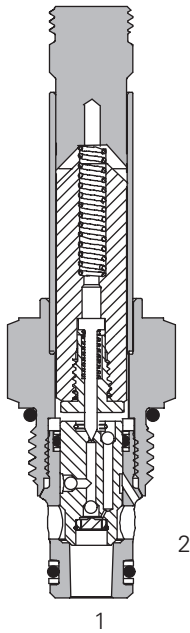
In the de-energized position the valve is blocked in both directions. When the solenoid is energized the pilot poppet is released from the seat allowing the main poppet to open.

A series of internal check valves allows full flow in both directions.

Features

Hardened and ground working parts. Lapped seat for low leakage. IP69K Tough coil compatibility. Continuously rated. Compact design with low pressure drop. 350 bar working pressure.

Sectional View



Performance Data

Ratings and Specifications

Performance data is typical with fluid at 21,8 cST (105 SUS) and 49°C (120°F)

Typical application pressure (all ports)	350 bar (5000 psi)
Cartridge fatigue pressure (infinite life)	310 bar (4500 psi)
Rated flow	60 L/min (15 USgpm)
Internal leakage, port 1 to port 2 & port 2 to port 1	5 drops/min, max @ 350 bar (5000 psi)
Temperature range	-40° to 100°C (-40° to 212°F)
Coil duty	Continuous from 85% to 110% of nominal voltage
Cavity	C-8-2
Fluids	All general purpose hydraulic fluids such as: MIL-H-5606, SAE 10, SAE 20 etc.
Filtration	Cleanliness code 18/16/13
Housing material (standard)	Aluminum or steel
Weight cartridge only	0,12 kg (0.26 lbs)
Seal kit	02-160777 (Buna-N), 02-160778 (Viton)

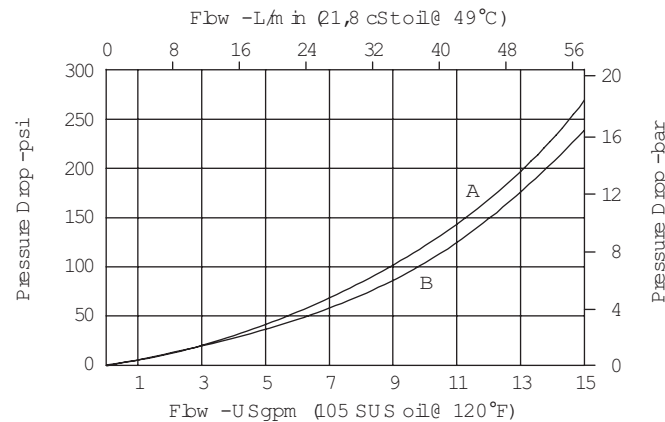
Viton is a registered trademark of E.I. DuPont

Description

This is a 2-way 2-position, high pressure bi-directional, pilot operated, normally closed poppet type screw in cartridge valve. The valve is ideal for isolating and holding actuators in position.

Pressure Drop

Cartridge only



available at:

ATP Hydraulik AG

Aahusweg 8

CH-6403 Küsnacht am Rigi

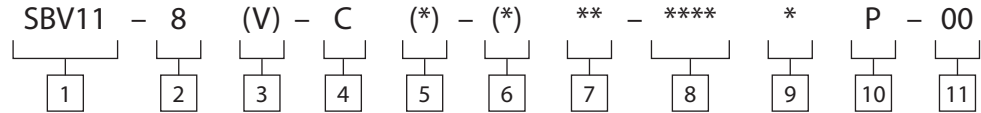
www.atphdraulik.com

Where measurements are critical request certified drawings. We reserve the right to change specifications without notice.

SBV11-8-C - Solenoid Bi-directional Valve

Bi-directional, normally closed solenoid valve
60 L/min (15 USgpm) • 350 bar (5000 psi)

Model Code



1 Function
SBV11 - Solenoid valve

2 Size
8 - 8 size

3 Seal Material
Blank - Buna-N
V - Viton*

4 Style
C - Normally closed

5 Manual Override Option
Blank - No manual override
M - Manual override
Forvalvedimensionswithmanualover-
rideoptioninstalledseepageA-980.

6 Valve Housing Material
Blank - Cartridge only
A - Aluminum
S - Steel

7 Port Size

Code	Port Size	Housing Number	
		Aluminium	Steel
0	Cartridge only		
2G	1/4" BSPP	02-160727	02-160733
3G	3/8" BSPP	02-160728	02-160734
4T	SAE 4	02-160730	02-160736
6T	SAE 6	02-160731	02-160737
8T	SAE 8	02-160732	02-160738

See section J for housing details.

8 Voltage Rating

00 -	No coil	24A -	24VAC
12D -	12VDC	115A -	115VAC
24D -	24VDC	230A -	230VAC
36D -	36VDC	12B -	12VDC/w diode*
		24B -	24VDC/w diode*

*Optional arc suppression diode.

9 Connector Types

Blank - No coil
G - ISO 4400 DIN 43650
Q - Spade terminals
W - Flying lead
N - Deutsch (DC only)
Y - Amp JR (DC only)
D - Metripack 150 male (DC only)
J - Metripack 280 male (DC only)

10 Coil Series

P - 8 series, 23 W
Forcoilpartnumbersanddimensions
see section C.

11 Special Features

00 - None
(Only required if valve has special
features omitted if "00.")

Dimensions

mm (inch)

Cartridge Only

