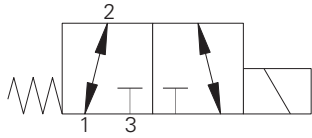


# SV4-8-3/3M - Solenoid Valve

3-way, 2-position spool type solenoid valve  
13 L/min (4 USgpm) • 210 bar (3000 psi)

A



## Operation

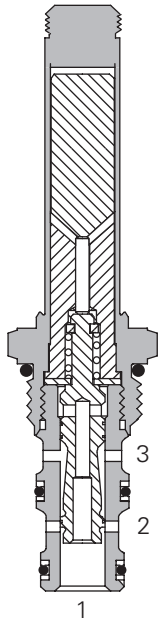
In the de-energized position this valve allows flow from port 2 to 1 while port 3 is blocked.

In the energized position flow is allowed from port 2 to port 3 while port 1 is blocked.

## Features

Hardened, ground and honed working parts to limit leakage. IP69K Tough coil compatibility. Continuously rated. Compact design with low pressure drop. Rated pressure on all ports.

## Sectional View



## Performance Data

### Ratings and Specifications

Performance data is typical with fluid at 21,8 cST (105 SUS) and 49°C (120°F)

Typical application pressure (all ports)	210 bar (3000 psi)
Cartridge fatigue pressure (infinite life)	210 bar (3000 psi)
Rated flow	13 L/min (4 USgpm)
Internal leakage	82 cm <sup>3</sup> /min (5 in <sup>3</sup> /min) max @ 210 bar (3000 psi)
Temperature range	-40° to 120°C (-40° to 248°F)
Coil duty	Continuous from 85% to 110% of nominal voltage
Response times (100% rated voltage and flow)	Energize: 22 ms De-Energize: 27 ms
Cavity	C-8-3
Fluids	All general purpose hydraulic fluids such as: MIL-H-5606, SAE 10, SAE 20 etc.
Filtration	Cleanliness code 18/16/13
Housing material (standard)	Aluminum
Weight including coil	0,29 kg (0.64 lbs)
Seal kit	02-160755 (Buna-N), 02-160756 (Viton)

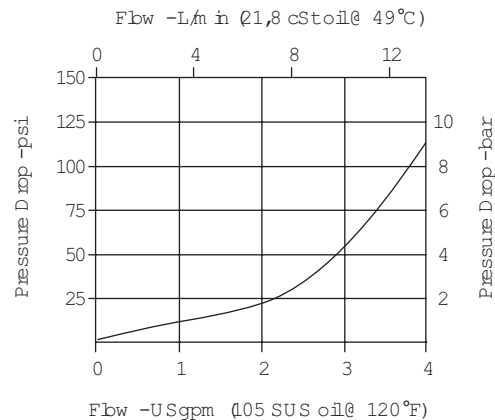
Viton is a registered trademark of E.I. DuPont

Note: Pressure on port 1 should not exceed 20 bar (300 psi).

## Description

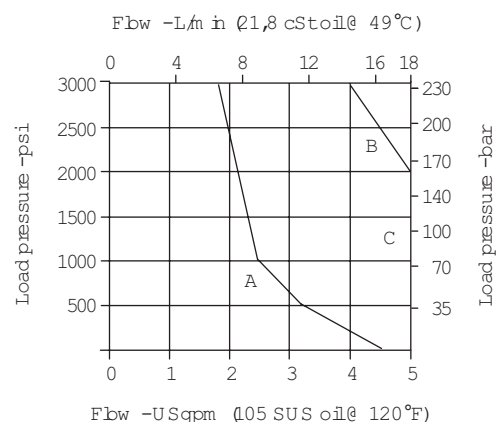
This is a 3-way 2-position, direct acting, spool type solenoid valve. This valve can be used in applications requiring separate pressure and tank lines, such as a single acting cylinder or any other application where a three way two position solenoid valve is needed.

## Pressure Drop



### Pressure Drop vs. Flow

Port 2 to 1 and  
port 2 to port 3



### Operating Limits

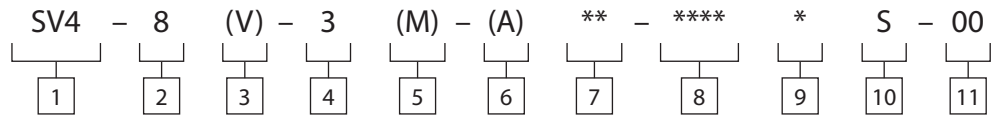
A - Normally open port 1 to port 2  
B - Normally closed port 3 to port 1  
C - Selector 2 to 1 and 2 to 3

Where measurements are critical request certified drawings. We reserve the right to change specifications without notice.

# SV4-8-3/3M - Solenoid Valve

3-way, 2-position spool type solenoid valve  
13 L/min (4 USgpm) • 210 bar (3000 psi)

## Model Code



**1** Function  
SV4 - Solenoid valve

**2** Size  
8 - 8 size

**3** Seal Material  
Blank - Buna-N  
V - Viton\*

**4** Style  
3 - 3-way, 2 position

**5** Manual Override Option  
Blank - No manual override  
M - Push type  
For valve dimensions with manual override option installed see page A-980.

**6** Valve Housing Material  
Omit for cartridge only

**7** Port Size

Code	Port Size	Housing Number
0	Cartridge only	
2G	1/4" BSPP	02-160739
3G	3/8" BSPP	02-160740
4T	SAE 4	02-160741
6T	SAE 6	02-160742

See section J for housing details.

**8** Voltage Rating

00 - No coil	24A - 24VAC
12D - 12VDC	115A - 115VAC
24D - 24VDC	230A - 230VAC
36D - 36VDC	12B - 12VDC/w diode*
	24B - 24VDC/w diode*

\*Optional arc suppression diode.

**9** Connector Types  
Blank - No coil  
G - ISO 4400 DIN 43650  
Q - Spade terminals  
W - Flying lead  
N - Deutsch (DC only)  
Y - Amp JR (DC only)  
D - Metripack 150 male (DC only)  
J - Metripack 280 male (DC only)

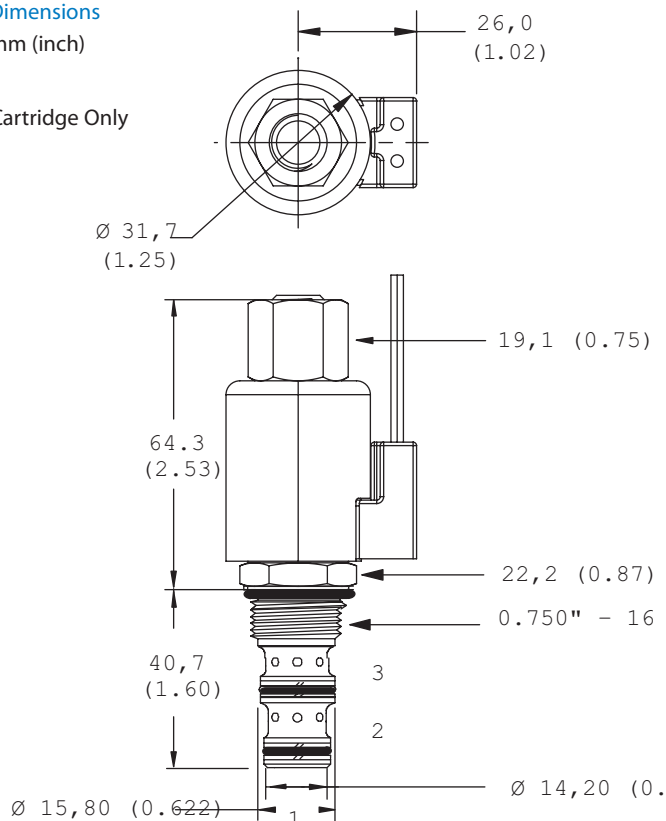
**10** Coil Series  
S - 8 series, 20 W  
For coil part numbers and dimensions see section C.

**11** Special Features  
00 - None  
(Only required if valve has special features, omitted if "00")

## Dimensions

mm (inch)

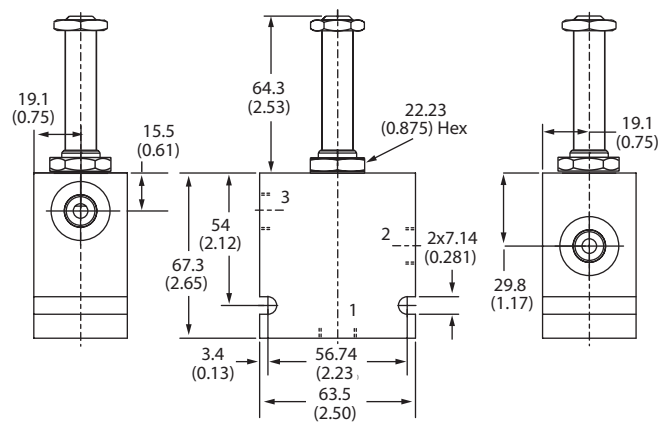
Cartridge Only



Torque cartridge in steel or aluminum housing 34-41 Nm (25-30 ft lbs)

Note: When solenoid valve is ordered as cartridge only, nut is included.

## Installation Drawing



**WARNING**  
Maintain 5-8 Nm (4-6 ft lbs) maximum torque on valve tube nut. Over tightening may cause valve failure.