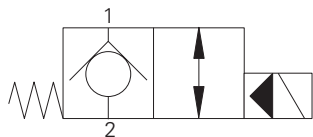


# SV3-10-C/CM/CR - Solenoid Valve

2-way, 2-position, normally closed, poppet type solenoid valve

45 L/min (12 USgpm) • 210 bar (3000 psi)



## Operation

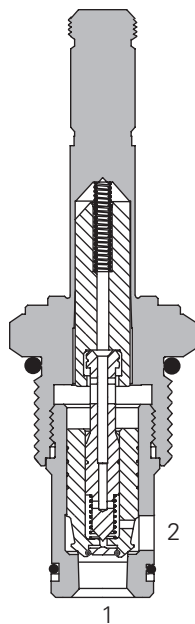
In the de-energized position the valve blocks flow from port 2 to 1 and free flow is allowed from port 1 to 2.

When the solenoid is energized the pilot poppet is pulled off the seat allowing the valve to open in both directions.

## Features

Hardened and ground working parts. Lapped seat for low leakage. IP69K Tough coil compatibility. Continuously rated. Compact design with low pressure drop.

## Sectional View



## Performance Data

### Ratings and Specifications

Performance data is typical with fluid at 21,8 cSt (105 SUS) and 49°C (120°F)

Typical application pressure (all ports)	210 bar (3000 psi)
Cartridge fatigue pressure (infinite life)	210 bar (3000 psi)
Rated flow	45 L/min (12 USgpm)
Internal leakage	less than 5 drops/min, max @ 210 bar (3000 psi)
Temperature range	-40° to 120°C (-40° to 248°F)
Coil duty	Continuous from 85% to 110% of nominal voltage
Cavity	C-10-2
Fluids	All general purpose hydraulic fluids such as: MIL-H-5606, SAE 10, SAE 20 etc.
Filtration	Cleanliness code 18/16/13
Housing material (standard)	Aluminum
Weight cartridge only	0,4 kg (0.87 lbs)
Seal kit	565803 (Buna-N), 566086 (Viton®)

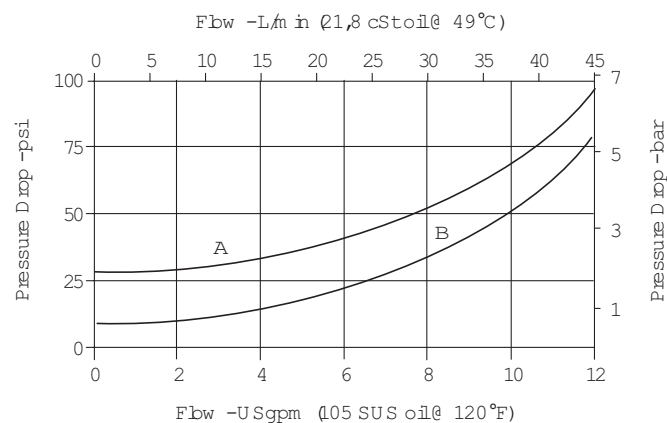
Viton is a registered trademark of E.I. DuPont

## Description

This is a 2-way, 2-position, poppet type, pilot operated, normally closed solenoid valve. This valve is used in applications requiring low leakage, such as load holding applications or as a general purpose diverter or dump valve.

## Pressure Drop Curves

Cartridge only



# SV3-10-C/CM/CR - Solenoid Valve

2-way, 2-position, normally closed, poppet type solenoid valve

45 L/min (12 USgpm) • 210 bar (3000 psi)

## Model Code

SV3 - 10 (V) - C (\*) (F) - \*\* - \*\*\*\* \* - 00

1 2 3 4 5 6 7 8 9 10

**1** Function  
SV3 - Solenoid valve

**2** Size  
10 - 10 size

**3** Seal Material  
Blank - Buna-N  
V - Viton®

**4** Style  
C - Normally closed

**5** Manual Override Option  
Blank - No manual override  
M - Knob type  
R - Cable type  
For valve dimensions with manual override option installed see page A-980.

**6** Filter Options  
Blank - None  
F - Filter screen

**7** Port Size

Code	Port Size	Housing Number
0	Cartridge only	
3B	3/8" BSPP	02-175462*
2G	1/4" BSPP	876702
3G	3/8" BSPP	876703
6T	SAE 6	566151*
6H	SAE 6	876700
8H	SAE 8	876701

See section J for housing details.  
\*Light duty housing

**8** Voltage Rating

00 - No coil	24A - 24VAC
12D - 12VDC	115A - 115VAC
24D - 24VDC	230A - 230VAC
36D - 36VDC	12B - 12VDC/w diode*
	24B - 24VDC/w diode*

\*Optional arc suppression diode.

**9** Connector Types

Blank -	No coil
G -	ISO 4400 DIN 43650
Q -	Spade terminals
W -	Flying lead
N -	Deutsch (DC only)
Y -	Amp JR (DC only)
D -	Metripack 150 male (DC only)
J -	Metripack 280 male (DC only)

For coil part numbers and dimensions see section C.

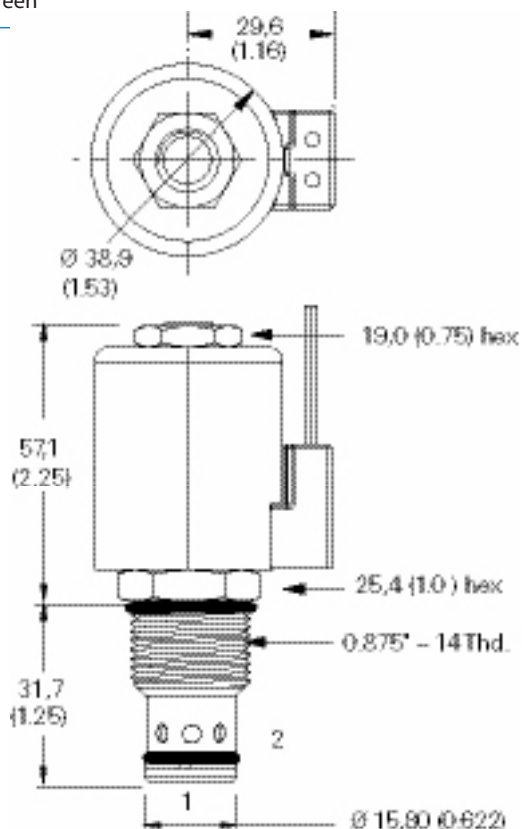
**10** Special Features

00 - None  
(Only required if valve has special features, omitted if "00.")

## Dimensions

mm (inch)

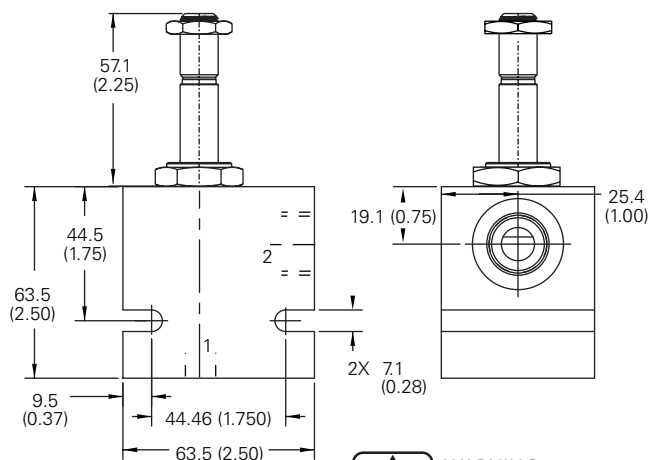
Cartridge Only



Torque cartridge in aluminum housing 47-54 Nm (35-40 ft lbs)

Note: When solenoid valve is ordered as cartridge only, coil nut is included.

## Installation Drawing



Note: Use J series, 23 W coils with this solenoid valve.



**WARNING**  
Maintain 5-8 Nm (4-6 ft lbs) maximum torque on valve tube nut.  
Over tightening may cause valve failure.