

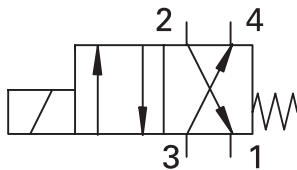
SV7-10-4/4P/4S

4-way, 2-position spool
type solenoid valve

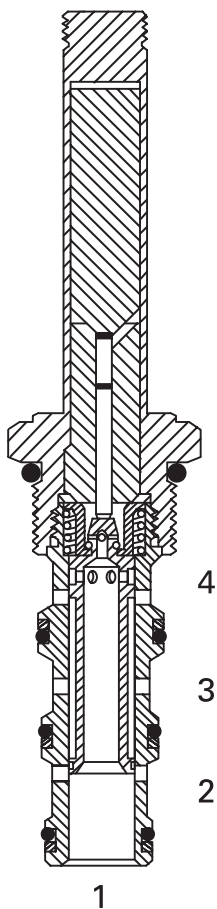
Description

The SV7-10-4 is a 4-way, 2-position, direct acting, spool type, screw-in cartridge solenoid valve.

Functional Symbol



Sectional View



Operation

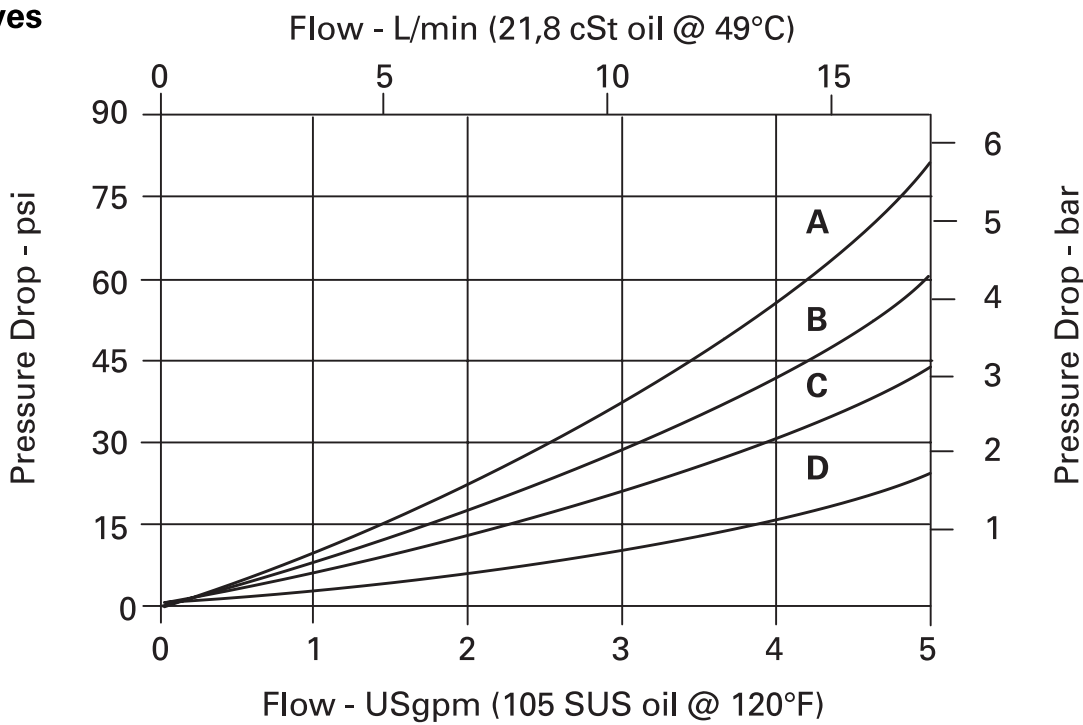
In the de-energized position, port 3 is open to port 4 and port 2 is open to port 1.

RATINGS AND SPECIFICATIONS

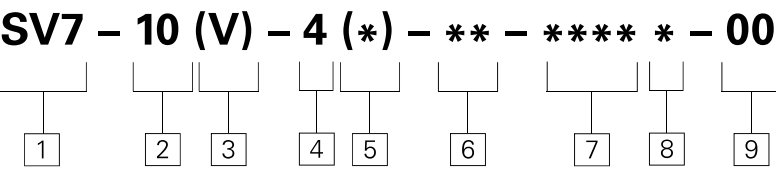
<i>Performance data is typical with fluid at 21,8 cST (105 SUS) and 49°C (120°F)</i>	
Typical application pressure (all ports)	210 bar (3000 psi)
Cartridge fatigue pressure (infinite life)	210 bar (3000 psi)
Rated flow	17 L/min (5 USgpm)
Internal leakage	164 cm ³ /min (10 in ³ /min) max. @ 210 bar (3000 psi)
Temperature range	-40° to 120°C (-40° to 248°F)
Coil duty	Continuous from 85% to 110% of nominal voltage
Cavity	C-10-4
Fluids	All general purpose hydraulic fluids such as: MIL-H-5606, SAE 10, SAE 20 etc.
Filtration	Cleanliness code 18/16/13
Housing material (standard)	Aluminum
Weight including coil	0,44 kg (0.96 lbs)
Seal kit	565805 (Buna-N), 889600 (Viton®) <small>Viton is a registered trademark of E.I. DuPont</small>

Pressure Drop Curves

Cartridge only



- A** - Port 4 to port 1 energized
- B** - Port 3 to port 2 energized
- C** - Port 3 to port 4 de-energized
- D** - Port 2 to port 1 de-energized



- 1

Function

SV7 - Solenoid valve
- 2

Size

10 - 10 size
- 3

Seal material

Blank - Buna-N
V - Viton®
- 4

Style

4 - 4-way, 2 position
- 5

Manual override option

Blank - No manual override
P - Push type
S - Screw type

For valve dimensions with manual override option installed see page A-134.

6

Port Size

CODE	PORT SIZE	HOUSING NUMBER
0	Cartridge only	
3B	3/8" BSPP	02-179705*
6T	SAE6	566161*
2G	1/4" BSPP	876709
3G	3/8" BSPP	876715
6H	SAE 6	876708
8H	SAE 8	876713

7

Voltage rating

00 - No coil
12D - 12VDC
24D - 24VDC
36D - 36VDC

24A - 24VAC
120A - 120VAC
240A - 240VAC
12B - 12VDC/w diode*
24B - 24VDC/w diode*
*Optional arc suppression diode.

8

Connector types

Blank - No coil
G - ISO 4400 DIN 43650
P - 1/2" NPT conduit port w/leadwire
Q - Spade terminals
W - Leadwire
N - Deutsch (DC only)
Y - Amp JR (DC only)
For coil dimensions see page C-5.

9

Special features

00 - None
(Only required if valve has special features, omitted if "00.")

Note
Use 10 series, 20 W coils with this solenoid valve.

Dimensions
mm (inch)

Torque cartridge in housing
47-54 Nm (35-40 ft. lbs)

Note
When solenoid valve is ordered as cartridge only, coil nut is included.

WARNING
Maintain 5-8 Nm (4-6 ft. lbs) maximum torque on valve tube nut. Over tightening may cause valve failure.

