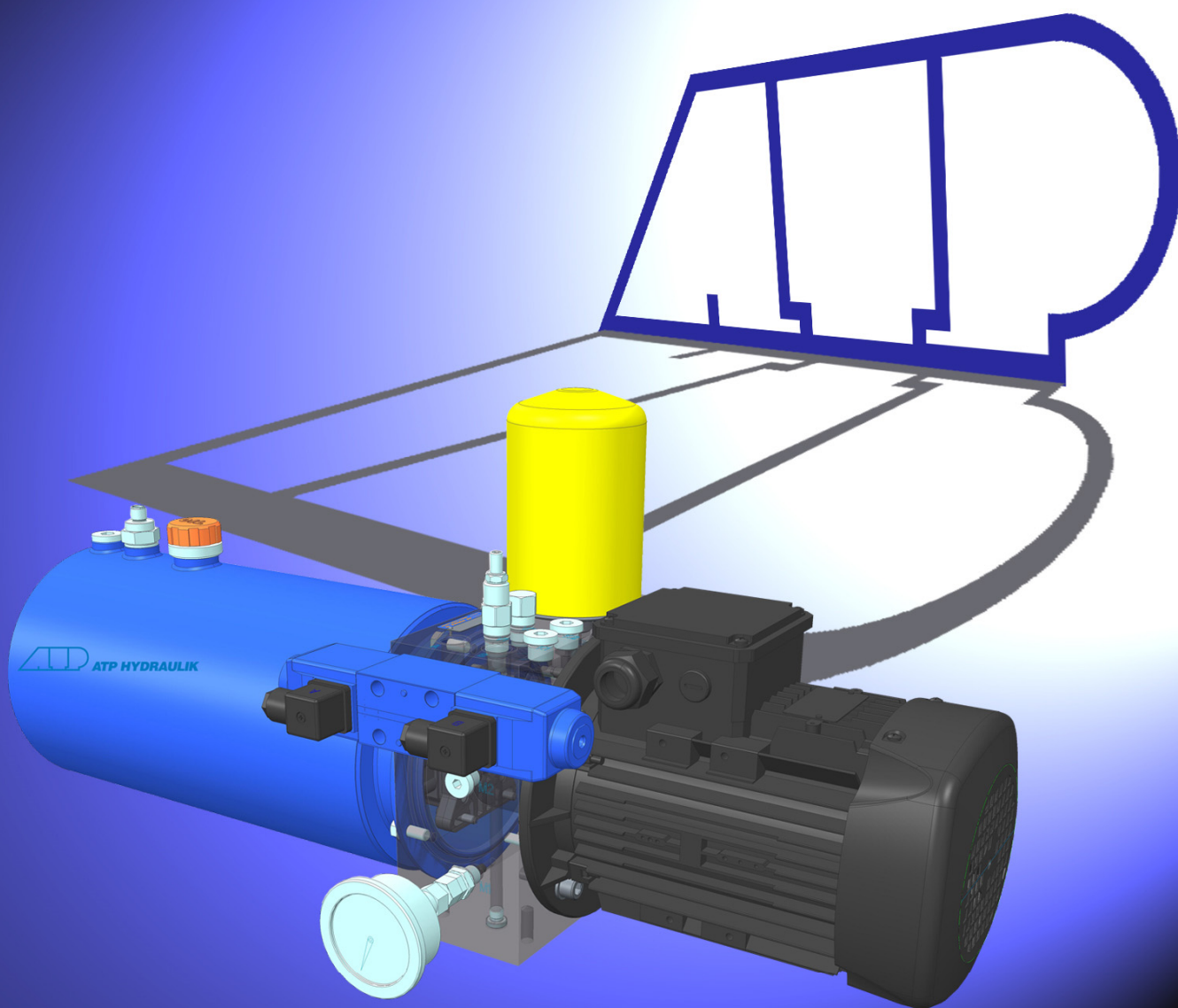
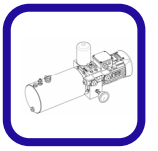
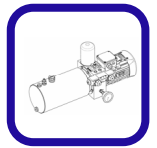


Standard Klein-Aggregate

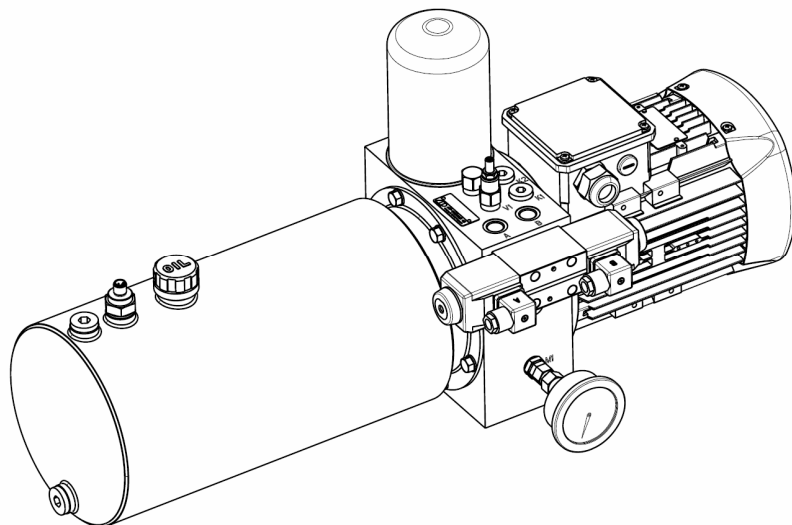


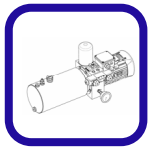




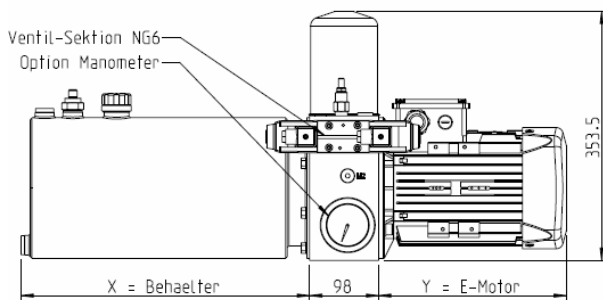
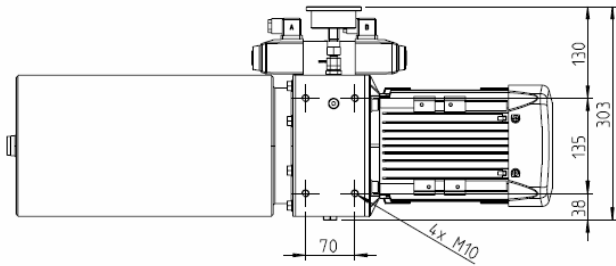
Inhaltsverzeichnis

| | |
|--|----|
| Komponentenüberblick | 4 |
| Typenschlüssel | 5 |
| Typ | 5 |
| Fördermenge/Motorleistung | 5 |
| Behälter | 5 |
| Druckbegrenzung V1 | 5 |
| Rückschlagventil Option Kühler V2 | 6 |
| Rückschlagventil Pumpe V4 | 6 |
| Manometer | 6 |
| Niveau-/Temperaturschalter | 6 |
| Heizung | 6 |
| Ventile auf Sektion NG6 | 6 |
| Schema zu Bestellbeispiel | 7 |
| Sandwich-Ventile zu Sektion NG06 | 8 |
| 1 Druckbegrenzungsventile | 8 |
| 2 Druckregelventile | 8 |
| 3 Lasthalteventile | 9 |
| 4 Rückschlagventile | 9 |
| 5 Strom- und Drosselrückschlagventil | 10 |
| Schieber-Ventile zu Sektion NG06 | 11 |
| 4/3-Wege-Ventil | 11 |
| 4/2-Wege-Ventil | 11 |
| 4/2-Wege-Ventil | 11 |
| 4/3-Wege-Ventil proportional | 11 |
| Blind-/Umlenkplatte | 12 |

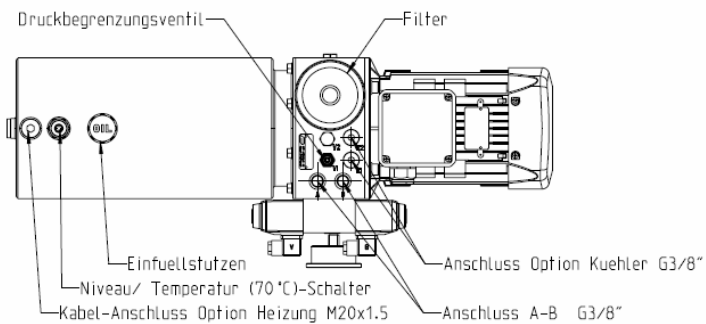




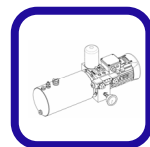
Komponentenüberblick



| | Leistung | Länge Y |
|---|----------|---------|
| A | 0.55 kW | 250 mm |
| B | 0.75 kW | 250 mm |
| C | 1.10 kW | 275 mm |
| D | 1.50 kW | 300 mm |
| E | 2.20 kW | 338 mm |
| F | 3.00 kW | 387 mm |



| | Behältervolumen | Länge X |
|-----|-----------------|---------|
| S10 | 10 L | 410 mm |
| S18 | 18 L | 700 mm |



Typenschlüssel

| Grösse und Leistung | | | | | | | | | | Basisfunktionen | | | | | | | Ventilsektion NG6 | | | | | | | | | | | | | |
|---------------------|---|---|---|---|---|---|---|---|---|-----------------|---|----|----|----|----|----|-------------------|---|----|-----|-----|-----|-----|-----|-----|-----|-----|-----|-----|-----|
| 1 | 2 | 3 | - | 4 | 5 | 6 | 7 | 8 | 9 | 10 | / | 11 | 12 | 13 | 14 | 15 | 16 | / | 17 | ... | ... | ... | ... | ... | ... | ... | ... | ... | ... | ... |
| M | P | U | - | | | | | | | | / | | | | | | | / | | | | | | | | | | | | |

Bestellbeispiel:

M P U - 0 3 D 1 S 1 0 / D K P M C H / G 5 B 1 C B

1 2 3 **Typ**

MPU = Mini Power Unit

Fördermenge/Motorleistung

E-Motor 4-polig (50Hz, ca.1440 U/min)

| 4 5 | Fördermenge | Druck | Leistung | 6 7 |
|-----|-------------|-------------|----------|------|
| 01= | 1.4 l/min | 110 bar | 0.55 kW | = A1 |
| | | 190 bar | 0.75 kW | = B1 |
| | | 300 bar (S) | 1.10 kW | = C1 |
| 02= | 2.8 l/min | 55 bar | 0.55 kW | = A1 |
| | | 95 bar | 0.75 kW | = B1 |
| | | 165 bar | 1.10 kW | = C1 |
| | | 245 bar | 1.50 kW | = D1 |
| 03= | 4.2 l/min | 300 bar (S) | 2.20 kW | = E1 |
| | | 40 bar | 0.55 kW | = A1 |
| | | 60 bar | 0.75 kW | = B1 |
| | | 110 bar | 1.10 kW | = C1 |
| 04= | 5.6 l/min | 160 bar | 1.50 kW | = D1 |
| | | 245 bar | 2.20 kW | = E1 |
| | | 25 bar | 0.55 kW | = A1 |
| | | 45 bar | 0.75 kW | = B1 |
| 05= | 7.0 l/min | 75 bar | 1.10 kW | = C1 |
| | | 115 bar | 1.50 kW | = D1 |
| | | 185 bar | 2.20 kW | = E1 |
| | | 15 bar | 0.55 kW | = A1 |
| | | 35 bar | 0.75 kW | = B1 |
| 06= | 8.4 l/min | 60 bar | 1.10 kW | = C1 |
| | | 85 bar | 1.50 kW | = D1 |
| | | 140 bar | 2.20 kW | = E1 |
| | | 10 bar | 0.55 kW | = A1 |
| | | 30 bar | 0.75 kW | = B1 |
| | | 55 bar | 1.10 kW | = C1 |
| | | 70 bar | 1.50 kW | = D1 |
| | | 115 bar | 2.20 kW | = E1 |

E-Motor 2-polig (50Hz, ca.2880 U/min)

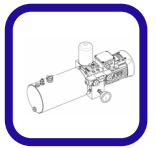
| 4 5 | Fördermenge | Druck | Leistung | 6 7 |
|-----|-------------|-------------|----------|------|
| 02= | 2.8 l/min | 45 bar | 0.75 kW | = B2 |
| | | 115 bar | 1.10 kW | = C2 |
| | | 200 bar | 1.50 kW | = D2 |
| | | 300 bar (S) | 2.20 kW | = E2 |
| 04= | 5.6 l/min | 20 bar | 0.75 kW | = B2 |
| | | 55 bar | 1.10 kW | = C2 |
| | | 95 bar | 1.50 kW | = D2 |
| | | 165 bar | 2.20 kW | = E2 |
| 06= | 8.4 l/min | 245 bar | 3.00 kW | = F2 |
| | | 30 bar | 1.10 kW | = C2 |
| | | 60 bar | 1.50 kW | = D2 |
| | | 110 bar | 2.20 kW | = E2 |
| 07= | 11.2 l/min | 160 bar | 3.00 kW | = F2 |
| | | 20 bar | 1.10 kW | = C2 |
| | | 40 bar | 1.50 kW | = D2 |
| | | 80 bar | 2.20 kW | = E2 |
| 08= | 14.0 l/min | 115 bar | 3.00 kW | = F2 |
| | | 30 bar | 1.50 kW | = D2 |
| | | 55 bar | 2.20 kW | = E2 |
| 09= | 16.8 l/min | 85 bar | 3.00 kW | = F2 |
| | | 25 bar | 1.50 kW | = D2 |
| | | 50 bar | 2.20 kW | = E2 |
| | | 75 bar | 3.00 kW | = F2 |

8 9 10 **Behälter**

S10 = Stahl 10 Liter
S18 = Stahl 18 Liter

11 **Druckbegrenzung V1**

0 = ohne Druckbegrenzungsventil
D = mit Druckbegrenzungsventil



12 *Rückschlagventil Option Kühler V2*

0 = ohne Rückschlagventil
K = mit Rückschlagventil 2bar

13 *Rückschlagventil Pumpe V4*

0 = ohne Rückschlagventil
P = mit Rückschlagventil

14 *Manometer*

0 = ohne Manometer
M = mit Manometer
N = mit Messanschluss

15 *Niveau-/Temperaturschalter*

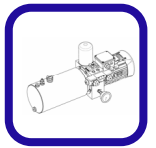
0 = ohne Niveau-/Temperaturschalter
A = Niveau-Schalter
B = Niveau-Schalter + Temperaturschaltpunkt 50°C
C = Niveau-Schalter + Temperaturschaltpunkt 60°C
D = Niveau-Schalter + Temperaturschaltpunkt 70°C
E = Niveau-Schalter + Temperaturschaltpunkt 80°C
F = Niveau-Schalter mit 2 programmierbaren Temperaturschaltpunkte und Anzeige

16 *Heizung*

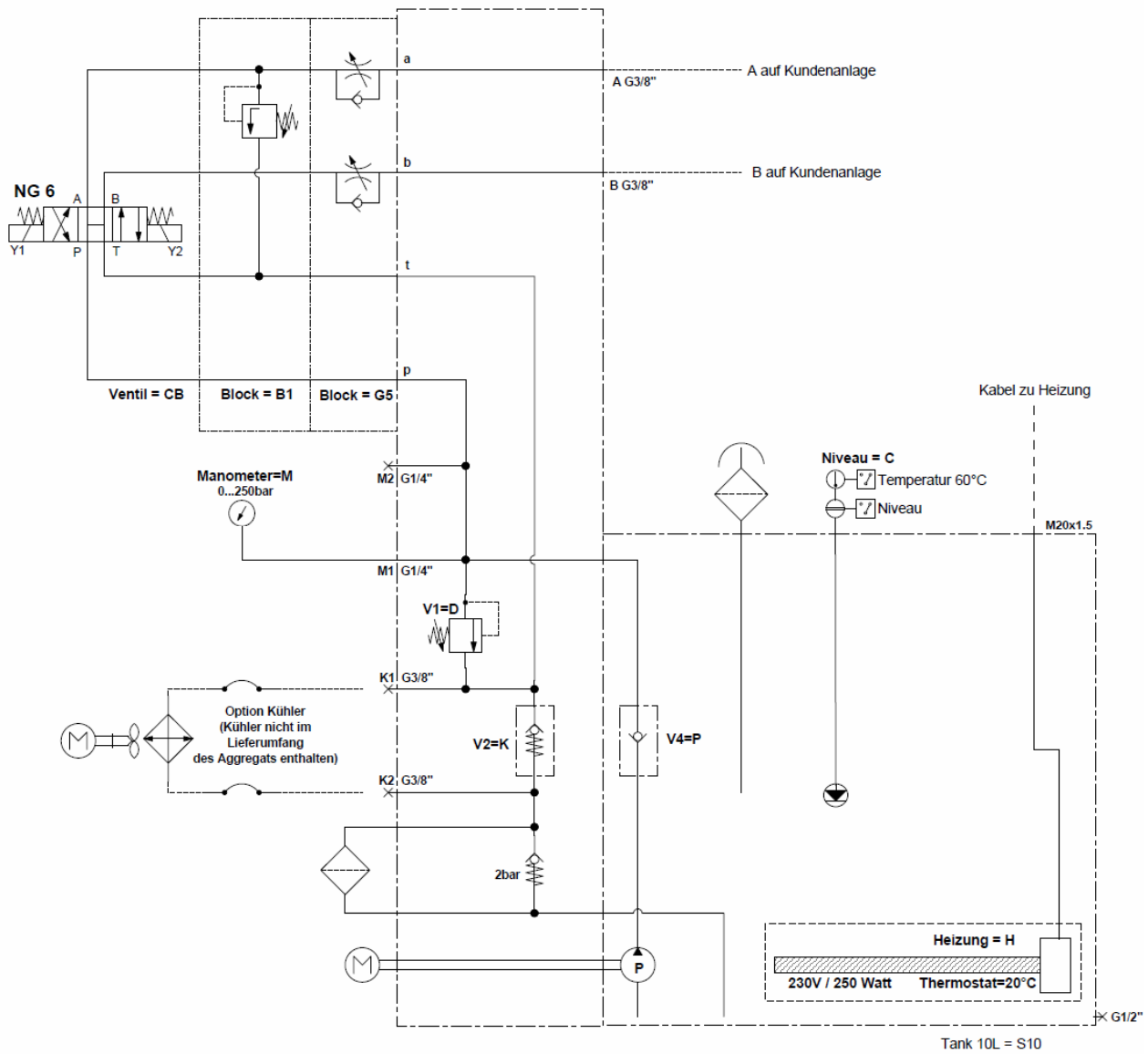
0 = ohne Heizung
H = mit Heizung 230V / 250W

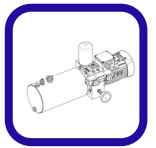
17ff *Ventile auf Sektion NG6*

Die Sandwich-Ventile und Schieberventile sind in derselben Reihenfolge zu definieren, wie die Ventilgehäuse durchflossen werden. Siehe dazu das Bestellbeispiel mit dem dazu passenden Schema.



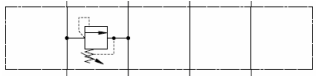
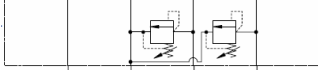
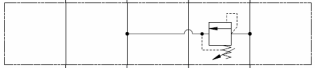

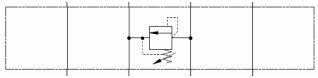
Schema zu Bestellbeispiel




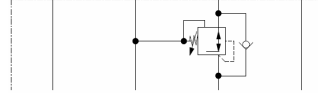
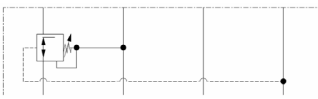
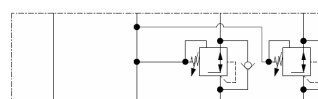
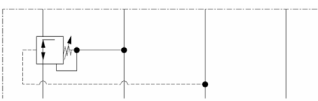
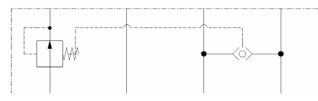
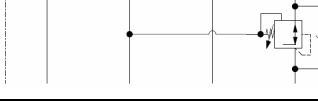
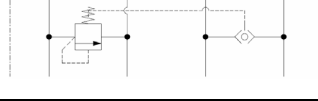


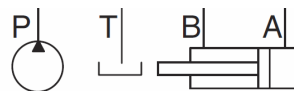
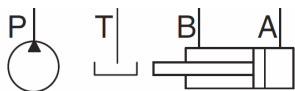
Sandwich-Ventile zu Sektion NG06

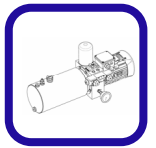
1 Druckbegrenzungsventile

| | | | | | | |
|------|---|----------|--|------|--|----------------------|
| A1 = |  | P nach T | | D1 = |  | A nach T B nach T |
| B1 = |  | A nach T | | E1 = |  | A nach B B nach A |
| C1 = |  | B nach T | | | | |

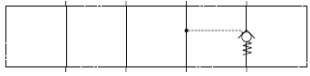

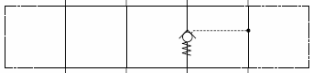

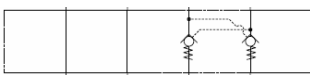
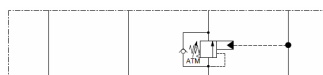
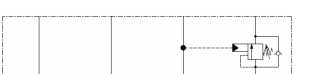
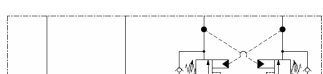

2 Druckregelventile

| | | | | | | |
|------|---|---|--|------|--|--|
| A2 = |  | Druckminderventil in P | | E2 = |  | Druckminderventil in B (mit RSV) |
| B2 = |  | Druckminderventil in P (geregelt mit A) | | F2 = |  | Druckminderventil in A+B (mit RSV) |
| C2 = |  | Druckminderventil in P (geregelt mit B) | | N2 = |  | 2-Wege- Druckwaage |
| D2 = |  | Druckminderventil in A (mit RSV) | | O2 = |  | 3-Wege- Druckwaage |


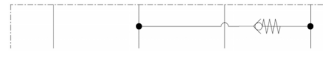

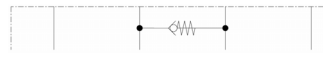

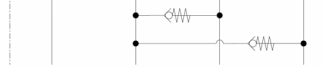








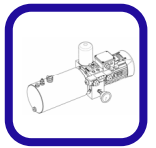
3 Lasthalteventile

| | | | | | |
|------|---|---------------------------------------|------|--|--|
| A3 = |  | entsperrbares Rückschlagventil in A | P3 = |  | Senkbremsventil in A+B |
| B3 = |  | entsperrbares Rückschlagventil in B | Q3 = |  | Senkbremsventil in A atmosphärisch entlastet |
| C3 = |  | entsperrbares Rückschlagventil in A+B | R3 = |  | Senkbremsventil in B atmosphärisch entlastet |
| N3 = |  | Senkbremsventil in A | S3 = |  | Senkbremsventil in A+B atmosphärisch entlastet |
| O3 = |  | Senkbremsventil in B | | | |


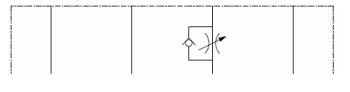

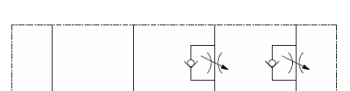
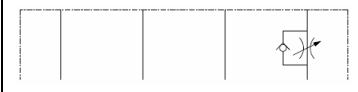
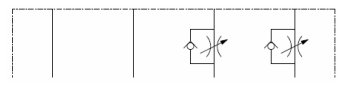
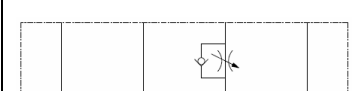

4 Rückschlagventile

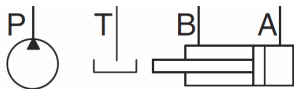
| | | | | | |
|------|---|--------------|------|--|----------------|
| A4 = |  | in P | F4 = |  | von T nach A |
| B4 = |  | in T | G4 = |  | von T nach B |
| C4 = |  | in A | H4 = |  | von T nach A+B |
| D4 = |  | in B | I4 = |  | von A nach B |
| E4 = |  | von T nach P | J4 = |  | von B nach A |

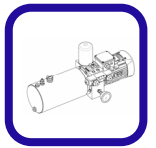




5 Strom- und Drosselrückschlagventil

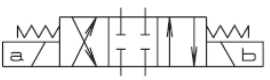

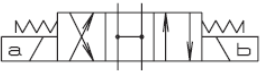

| | | | | | |
|---------|---|------------------------------------|---------|---|--------------------------------------|
| A5 = |  | Drossel in P | E5 = |  | DRV in B Ablauf ge- drosselt |
| B5= |  | DRV in A Zulauf ge- drosselt | F5 = |  | DRV in A+B Zulauf ge- drosselt |
| C5 = |  | DRV in A Ablauf ge- drosselt | G5 = |  | DRV in A+B Ablauf ge- drosselt |
| D5 = |  | DRV in B Zulauf ge- drosselt | H5 = |  | Drossel in T |




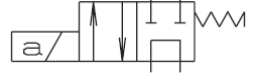





Schieber-Ventile zu Sektion NG06



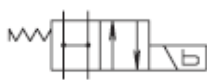


4/3-Wege-Ventil

| | | | | | | | |
|------|---|--|--|------|--|--|--|
| CA = |  | | | CC = |  | | |
| CB = |  | | | CD = |  | | |

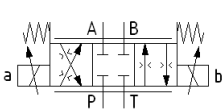
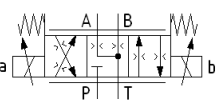
4/2-Wege-Ventil

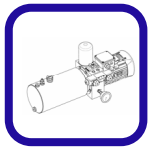
| | | | | | | | |
|------|---|--|--|------|---|--|--|
| AA = |  | | | AD = |  | | |
| AB = |  | | | AE = |  | | |
| AC = |  | | | | | | |

4/2-Wege-Ventil





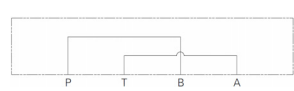
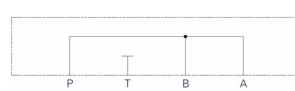

| | | | | | | | |
|------|---|--|--|------|--|--|--|
| BA = |  | | | BD = |  | | |
| BB = |  | | | BE = |  | | |
| BC = |  | | | | | | |

4/3-Wege-Ventil proportional

| | | | | | | | |
|------|---|--|--|------|--|--|--|
| PA = |  | | | PC = |  | | |
|------|---|--|--|------|--|--|--|



Blind-/Umlenkplatte

| | | | | | |
|------|---|--|------|--|--|
| EA = |  | | EE = |  | |
| EB= |  | | EF= |  | |
| EC = |  | | EG = |  | |
| ED = |  | | | | |

ATP Hydraulik AG
 Aahusweg 8
 CH-6403 Küssnacht am Rigi
 Tel +41 41 799 49 49
 info@atphydraulik.ch
<https://www.atphydraulik.ch>
<https://shop.atphydraulik.ch>

ATP Hydraulik GmbH
 Gewerbestr. 8C
 DE-87787 Wolfertschwenden
 Tel + 49 8334 989 5040
 info@atphydraulik.com
<https://www.atphydraulik.com>