

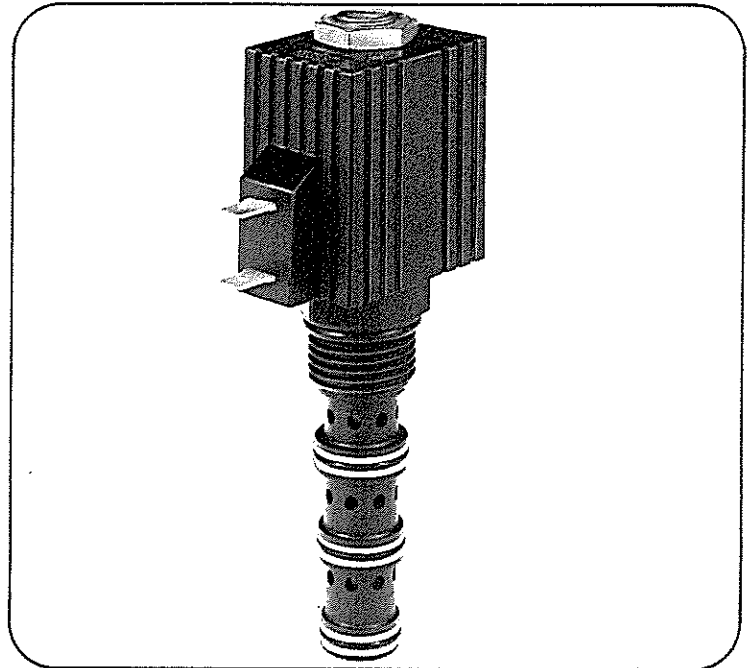
Series 14

Solenoid Cartridge Valves

Selector Valve • 4-Way Spool • 8 GPM (30 l/min) • 3000 PSI (210 bar)

Features . . .

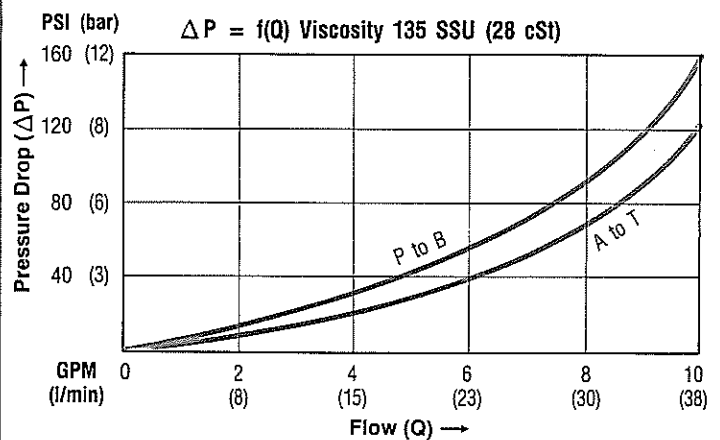
- High flow capacity with reduced space requirements.
- No dynamic seals.
- Standard valve bodies and common cavities.
- One-piece encapsulated coil with minimal amperage draw.
- Oil immersed armature solenoid.
- Numerous coil terminals and voltages.
- Coil interchangeability with Series 14, 21 and 26 valves.
- Manual overrides, seal variations and other options available.



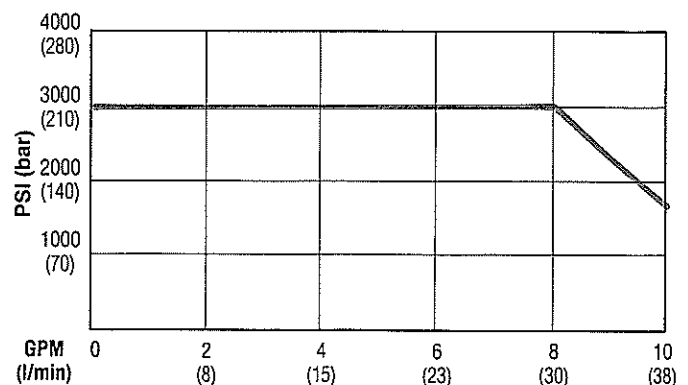
Specifications . . .

		NORMALLY CLOSED
Basic Model No.		14C41S
Symbol		
Nominal Flow (at $\Delta P = 70$ psi)		8 GPM (30 l/min)
Max. Operating Press		3000 psi (210 bar)
Response time dependent on flow & pressure	OPEN	50 to 150 mil-sec
	CLOSE	45 to 120 mil-sec
Design		Working parts hardened, ground & honed
Media Recommendation		General purpose hydraulic fluid
Filtration		30 micron nominal
Media Operating Temperature Range		+200° F (+93.3° C) to -45° F (-42.7° C)
Seals		Buna-N O-rings, teflon back-up washer
Mounting Position		Unrestricted
Weight		13.0 ounces (.37 kg) approximate
Cavity Form Tool No.		FT14-4 (Cavity Style #14-4).
Options		See ordering information or consult manufacturer
Electrical Data		See Series 14 Coil Data Sheet.
Valve Body Data		See Series 14 Valve Body Data Sheet.

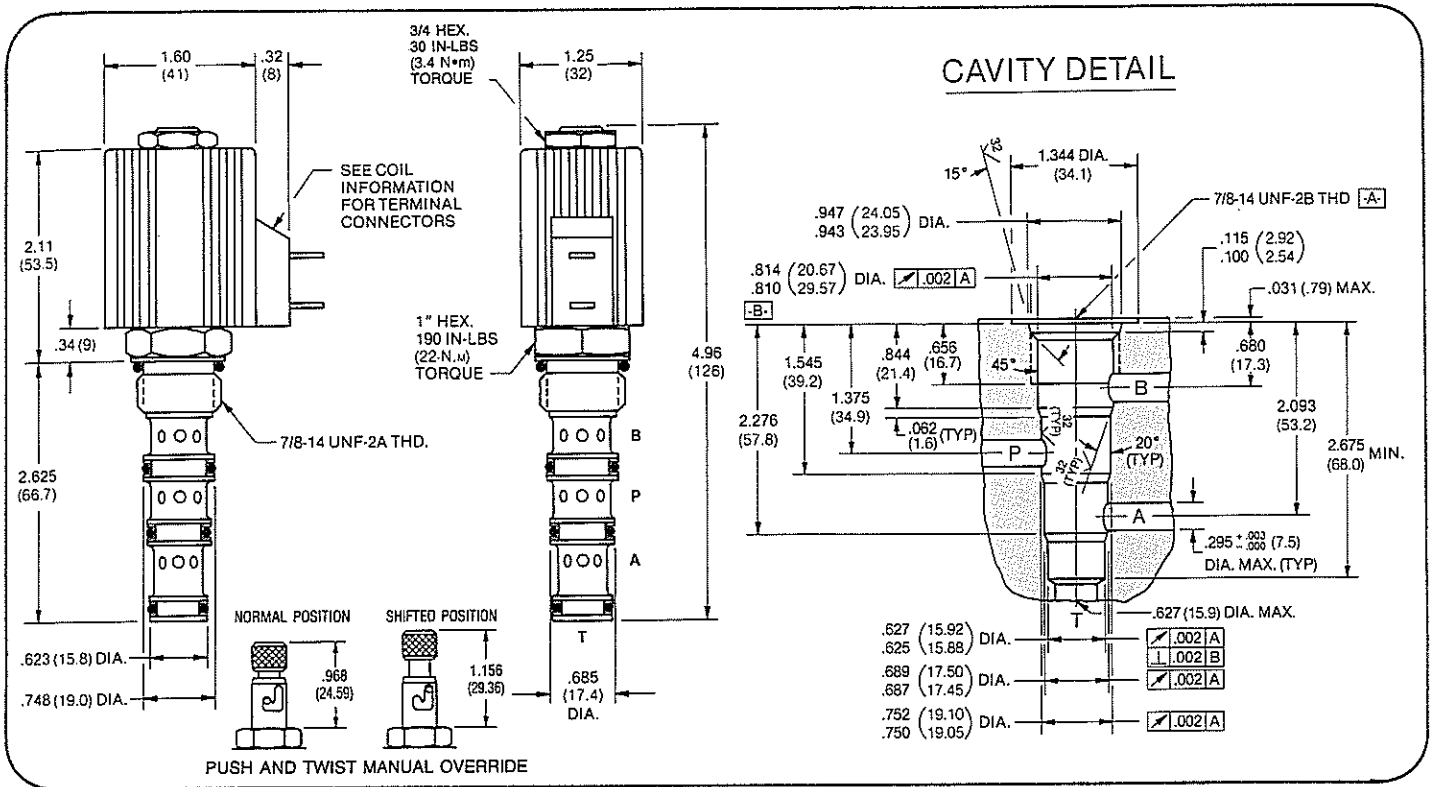
Pressure Drop vs. Flow . . .



Valve Performance Operating Characteristics . . .



Dimensions . . .



Ordering Information . . .

14CXS-(X)-XXX-XX	Options	Terminal Type	Voltage	Valve Body Porting																																							
<p>1 Base Model</p> <p>14C41S — 8 GPM (30 l/min) With Standard Coil</p>	<p>1 — Viton Seal</p> <p>10 — Push and Twist Manual Override</p>	<p>0 — No Coil</p> <p>A — Double spade male terminals</p> <p>B — Double lead wire</p> <p>C — Single lead wire (internally ground)</p> <p>D — Single screw (internally ground)</p> <p>E — Double lead wire w/ conduit connector</p> <p>F — ISO Standard per DIN 43650</p>	<table border="1"> <thead> <tr> <th>Std.</th> <th>H.D.</th> <th>Voltage</th> </tr> </thead> <tbody> <tr><td>06</td><td>06H</td><td>6VDC</td></tr> <tr><td>10</td><td>10H</td><td>10VDC</td></tr> <tr><td>12</td><td>12H</td><td>12VDC</td></tr> <tr><td>18</td><td>18H</td><td>18VDC</td></tr> <tr><td>24</td><td>24H</td><td>24VDC</td></tr> <tr><td>36</td><td>36H</td><td>36VDC</td></tr> <tr><td>48</td><td>48H</td><td>48VDC</td></tr> <tr><td>11</td><td>11H</td><td>115VAC*</td></tr> <tr><td>23</td><td>23H</td><td>230VAC*</td></tr> <tr><td>44</td><td>44H</td><td>440VAC*</td></tr> </tbody> </table> <p>*50/60 Hz</p> <p>H.D. Coil is recommended to compensate for excessive voltage drop.</p> <p>See Series 14 Coil Data Sheet</p>	Std.	H.D.	Voltage	06	06H	6VDC	10	10H	10VDC	12	12H	12VDC	18	18H	18VDC	24	24H	24VDC	36	36H	36VDC	48	48H	48VDC	11	11H	115VAC*	23	23H	230VAC*	44	44H	440VAC*	<p>5 Valve Body Porting</p> <table border="1"> <thead> <tr> <th>N.P.T.F.</th> <th>S.A.E.</th> </tr> </thead> <tbody> <tr><td>2-1/4"</td><td>T6-3/8"</td></tr> <tr><td>3-3/8"</td><td>T8-1/2"</td></tr> </tbody> </table> <p>BSP G</p> <p>G2-1/4"</p> <p>G3-3/8"</p> <p>Omit when body is not included.</p> <p>See Series 14 Valve Body Data Sheet</p>	N.P.T.F.	S.A.E.	2-1/4"	T6-3/8"	3-3/8"	T8-1/2"
Std.	H.D.	Voltage																																									
06	06H	6VDC																																									
10	10H	10VDC																																									
12	12H	12VDC																																									
18	18H	18VDC																																									
24	24H	24VDC																																									
36	36H	36VDC																																									
48	48H	48VDC																																									
11	11H	115VAC*																																									
23	23H	230VAC*																																									
44	44H	440VAC*																																									
N.P.T.F.	S.A.E.																																										
2-1/4"	T6-3/8"																																										
3-3/8"	T8-1/2"																																										

Waterman Hydraulics
6565 W. Howard Street
Niles, Illinois 60714-3397

WATERMAN[®]
HYDRAULICS